

BIO Scientific pty. ltd.

Newsletter MARCH 2017

BioScientific aims to keep our researchers and customers updated with news from our various suppliers with our Newsletter



ARBOR
ASSAYS

THE ROLE OF THYROXINE IN PHOTO STIMULATION



Changes in the length of day throughout the year can be a marker for critical species functions such as migration, hibernation, and mating. These changes have been shown to affect an organism's morphology and hormones as well as other biomarkers. For example, the thyroid hormones T₃ and T₄ have previously been demonstrated to have roles in the regulation of photoperiod response in birds. Birds that lack appropriate photoperiod response may not migrate or mate as they normally would.

In a January 2017 paper [Mishra et al.](#) examined hypothalamic gene expression along with thyroid hormone levels and morphological changes to track the response of male redheaded buntings to both acute (2 cycles) and chronic (12 cycles) long days.

Read the rest of this article:

<http://www.arborassays.com/thyroid-hormones-photoperiodic-response/>

Prompt delivery – less than 3 weeks!

Check pricing www.biosci.com.au

BIOSYSTEMS
Acro

Biotinylated CD30, CD38, influenza, and Zika proteins available now

ACROBiosystems is glad to announce the addition of 29 new products in its flagship PrecisionAvi biotinylated protein series, including biotinylated Human CD30 (Cat.# [CD0-H82E6](#)), biotinylated Human CD38 (Cat.# [CD8-H82E7](#)) and biotinylated Human CD47 (Cat.# [CD7-H82E9](#)). These new products are developed using Avitag™ technology, and are pre-validated in binding assays.

For quotations and availability – please contact sales@biosci.com.au

Lipidic Cubic Phase Crystals

Short Lipids – now available!



Crystallization in the Lipidic Cubic Phase

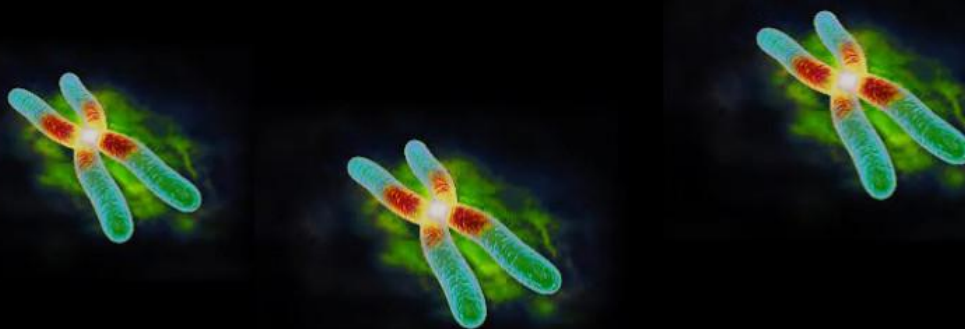
(LCP) has evolved into an important method for crystallization of membrane proteins, with the lipid Monoolein being the first choice to create a stable LCP. In the past few years however, the short lipids [7.7 MAG](#)^[4,7], [7.8 MAG](#)^[6-8], [7.9 MAG](#)^[5,7] (Table 1, highlighted) have become increasingly popular and the recent progress in applying the highly viscous lipidic cubic phase for serial femtosecond crystallography (LCP-SFX)^[1-3] further accelerates the success of the LCP method by

- delivering the crystal-loaded viscous LCP directly into the XFEL beam (thereby reducing sample consumption in comparison to liquid injectors),
- taking advantage of the inherently small crystals grown in LCP,
- avoiding tricky crystal mounting from LCP.

For further information please contact us – info@biosci.com.au



Light your chromosomes up with Cambio Star*FISH paints

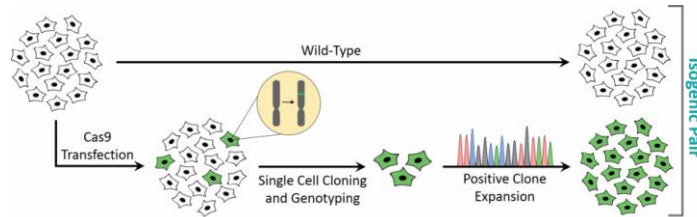


Chromosome paints are DNA probes that allow specific fluorescent labelling of unique regions on chromosomes, allowing individual chromosomes and locations of specific genes on the chromosomes themselves to be readily identified. Chromosome paints are invaluable tools for both research and diagnosis of certain genetic diseases.

If you are looking for reliable, trusted and highly cited chromosome paints you might find [Cambio Star*FISH](#) chromosome paints useful for your project. Cambio have been supplying Star*FISH chromosome paints of exceptional quality for many years. Our range of Pan-centromeric and chromosome paints for both mouse and human have been used for over 20 years with great success. BioScientific have distributed CAMBIO for over 20 years – visit the website for pricing – www.biosci.com.au or email info@biosci.com.au



Isogenic Cell Lines for Drug Discovery: Isogenic cell lines represent a unique toolset for studying the impact of genotype on cellular phenotype.



Please visit www.appliedstemcell.com for more information and pricing info@biosci.com.au

invitron *Our proprietary technology platform enables us to produce high sensitivity diagnostic tests that combine reliability and ease of use with the highest attainable performance. Products available:*

Diabetes and Metabolism Assay Kits

Laboratory Reagents and Custom Products

Chromogranin A Assay Kits

Instrumentation

Luminescence assay instrumentation

ELISA instrumentation

As a global supplier of high quality diagnostic tests kits, Invitron is committed to the continued development of new and innovative products for use in healthcare and toxicology.

Enquiries : info@biosci.com.au

RayBiotech, Inc.
the protein array pioneer company

2018 Calendar Photo Contest

Submit a photo of a spotted pattern resembling a RayBio array, and your image may be selected for the 2018 Calendar!

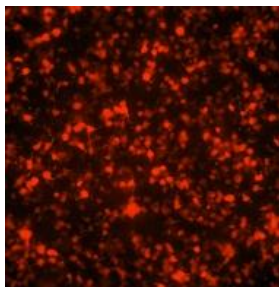
[Click this banner to learn more!](#)



RayBiotech invites amateur and professional photographers alike to enter its 2018 Calendar Photo Contest! We are looking for striking images of spotted patterns that commemorate the antibody arrays which RayBiotech was founded around. Images can include scientific images, portraits of animals, plants, minerals, landscapes or any other images striking enough to catch our attention. Further enquiries contact info@biosci.com.au

Genlantis, a division of Gene Therapy Systems, Inc., is focused on developing innovative kits for HIV and HBV Diagnostics, [genetic transfection](#), gene expression, Gene Silencing, RNA interference, primary cell culture, lab sterilization equipment, and sample preparation within protein expression systems and proteomics research. We are dedicated to serving the needs of life science researchers worldwide by embracing innovation and designing gene therapy products for their experimentation.

eLUCidate™ Cell Lines



The eLUCidate™ Reporter Cell Lines offer the following features and benefits

- Highest number of cells per vial (3×10^6) - Cells are ready for use shortly after thawing
- Optimized Luciferase reporter gene - High sensitivity and dynamic range
- Stringent quality control - Each cell line is tested for performance and sterility



Stem Cell Research

 - HumanZyme develops and manufactures growth factors and cytokines for stem cell research applications. HumanKine® cytokines and growth factors are applied to stem cells for culture expansion or to drive differentiation into specific cell types. The human cell manufacturing system ensures native human glycosylation and other human-specific modifications that can result in better bioactivity and enhanced half-life.

Contact us now for pricing: info@biosci.com.au

Please check our website www.biosci.com.au for a full listing and pricing from our other Agencies :



Trevigen®
Better Products. Better Results.



1300 BIOSCI

www.biosci.com.au

info@biosci.com.au